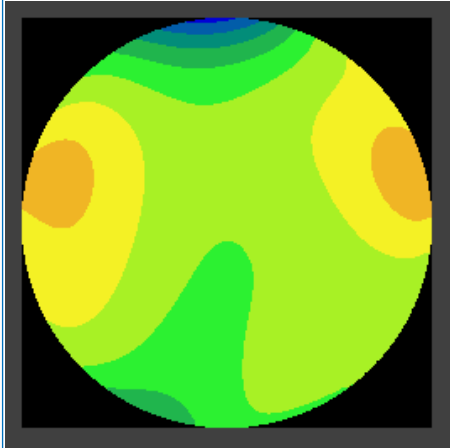
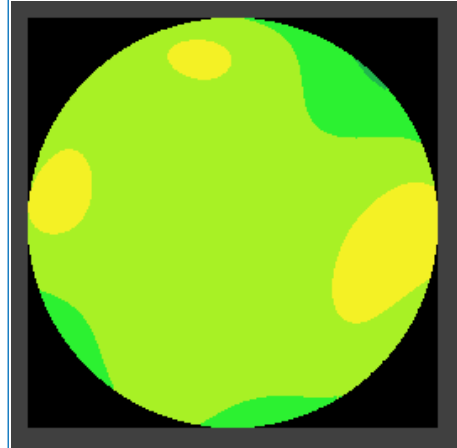
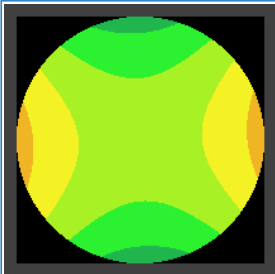
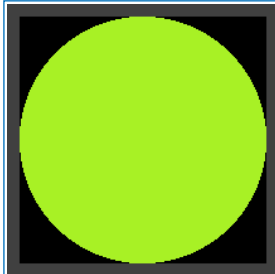


Patient Information

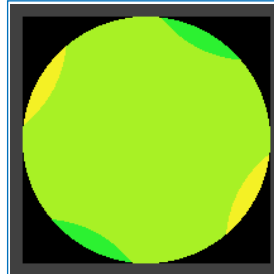
| | | | |
|---------------|-------------------|-----------|----------------------------|
| Patient | DEMO 2 | Gender | M |
| Patient ID | 1 | Exam Date | 25/02/2015 18:23:07 |
| Date of Birth | 01/01/2001 | Surgeon | |

ZERNIKE
OD
OS
Total Aberration (OPD)

 RMS = 0.39 μm
Total Aberration (OPD)

 RMS = 0.17 μm
Astigmatism


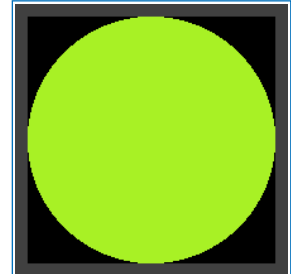
-0.80 D ax 3°

 RMS = 0.32 μm
Spherical Aber.


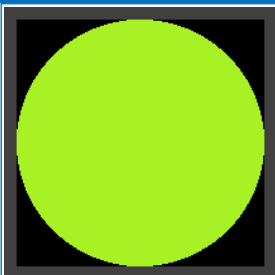
+1.08 D

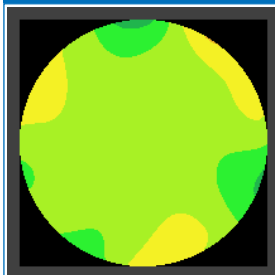
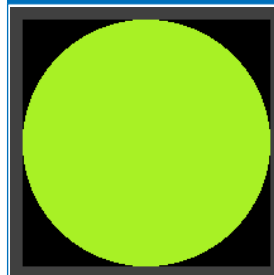
 RMS = 0.12 μm
Astigmatism


-0.27 D ax 152°

 RMS = 0.11 μm
Spherical Aber.


+0.74 D

 RMS = 0.08 μm
Coma

 RMS = 0.08 μm @ 299°

High Order

 RMS = 0.18 μm
Coma

 RMS = 0.03 μm @ 149°

High Order

 RMS = 0.11 μm
Notes