

It's time for
Triton

A Multimodal Swept Source OCT



YOUR VISION.
OUR FOCUS.

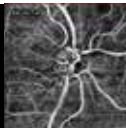
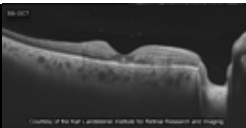
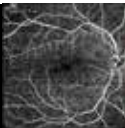
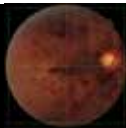
Topcon is the first in the world to introduce a combined anterior & posterior Swept Source OCT: the DRI OCT Triton.

The DRI OCT Triton offers a true color, non mydriatic fundus image while using a very low intensity flash. This unique feature is a perfect tool for identifying the location of scans in the eye utilizing Topcon's patented Pinpoint Registration™.

The DRI OCT Triton Plus offers a wide range of diagnostic options with multi-modal color fundus imaging, Fluorescein Angiography (FA) and Fundus Autofluorescence (FAF) for even more diagnostic possibilities. With a scanning speed of 100,000 A-Scans per second and the high penetration of the Swept Source light, DRI OCT Triton can clearly visualize both the vitreous and choroid in one single scan.

Topcon organized two succesfull conferences in 2017 and 2018 to discuss the clinical advances and applications of Swept Source OCT & Angiography. The conferences consisted of plenary sessions where leading ophthalmologists from across the world discussed new imaging findings and the implications for patient management. In this booklet you can find an overview of testimonials that were gathered during these conferences.

For more information, please visit www.sweptsourceoct.eu



Our panel of specialists



Dr. Arias
Spain



Dr. Jafree
UK



Prof. Khairallah
Tunisia



Dr. Khoa
France



Dr. Mekki
Algeria



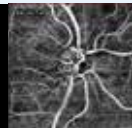
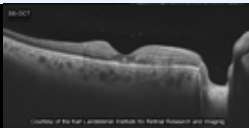
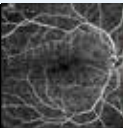
Prof. Moussa
Egypt



Prof. Shah-Jørgensen
Denmark



Dr. Tasindi
Turkey



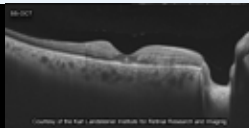
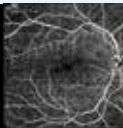
Which component of the DRI OCT Triton made you want to invest in this device for your practice?

Prof. Moussa

“Swept Source OCT helps me a lot because of its fast speed and deep penetration. Before, it could take a long time to gather imaging data, but with Swept Source it is very easy to do and can be captured quickly.”

Prof. Khairallah

“The Swept Source technology is very important for our clinical practice, and the combination of Swept Source OCT and OCT Angiography provides us with a lot of important clinical information that impacts our diagnosis and management decisions.”



Dr. Khoa

“There is not one unique element that makes the DRI OCT Triton stand out - it is the combination of all the different features as a whole. The fast capture capability and the deeper penetration of Swept Source OCT with a 2.6 mm scan depth, is very useful in a clinical environment.”

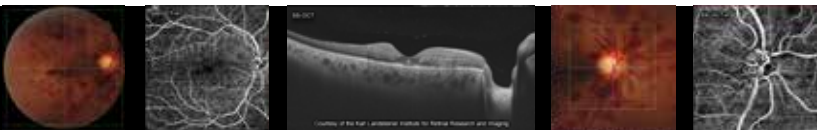
Dr. Arias

“Triton offers us a unique opportunity to see the retina and structures beneath, with a single capture. We can see the vitreous, inner and outer retinal layers, the choroid and even the sclera in one image.

This information is very helpful to ensure we make the correct decisions about how to manage our patients.”

Dr. Jafree

“When we compared different OCT devices, we immediately saw that the Triton had a much faster image acquisition compared to other devices. The image quality is brilliant.”



Experience with the Triton imaging capabilities through media opacities

Dr. Arias

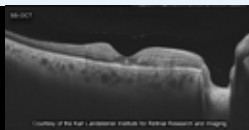
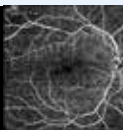
“Due to its longer wavelength the Triton offers us the opportunity to see the entire retina, even in presence of dense cataracts and media opacities.”

Prof. Khairallah

“In case of media opacities and vitreous it is still possible to scan good and deep. We found Swept Source OCT very useful in uveitis, providing high quality of images of the choroid. This is very important and the best characteristic of Swept Source OCT.”

Dr. Mekki

“We compared patients with SD OCT and SS OCT in the case of media opacities, like cataract. And we found that the images with the Triton are better. This is very important, especially when you need to perform cataract surgery. After this comparison we only use SS OCT to provide a better prognosis for the patient.”



Dr. Jafree

“Even with small pupils and media opacities you can get a scan of a decent quality.”

Prof. Moussa

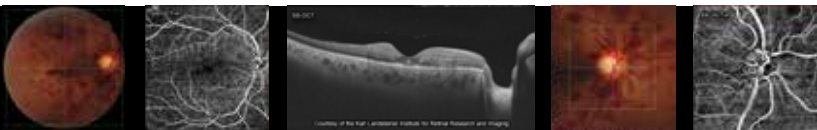
“With the spectral domain it is in many cases impossible to have a good view of the fundus, especially with cataract. If I need a good view of anything that is going on, I will always use Swept Source instead of the spectral domain.”

Dr. Khoa

“With Swept Source OCT I definitely have better visualization through cataract and media opacities. Even with very hard cataract the Swept Source image is still better compared to the spectral domain.”

Dr. Tasindi

“In my country many patients come to my clinic with cataract and media opacities and it is not easy to evaluate these patients. But as soon as I started using Triton, it is very easy to see the retina although the patient has a great density of cataract.”



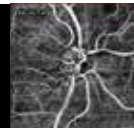
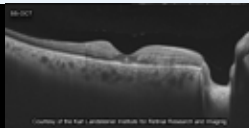
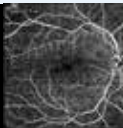
Comparison of the DRI OCT Triton with other OCT devices

Dr. Arias

“With other devices, you cannot examine the retina in case of opacities. The opportunity to see the different retina layers is the key difference with the Triton compared to other OCTs.”

Prof. Khairallah

“Images are better compared to the spectral domain OCTs. In patients with uveitis, we usually have vitreous and this cause images to have a bad quality. With Swept Source we have very good and high quality images, even in moderate vitreous. This is very important for our diagnosis and management for retina and choroid inflammatory diseases.”



Dr. Mekki

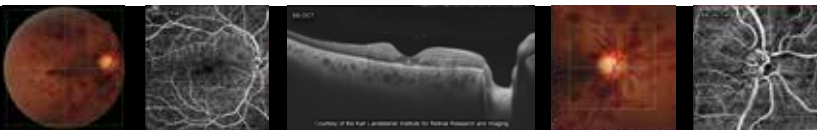
“The quality of the image is much better compared to other devices.”

Prof. Moussa

“The Triton is an all-in-one machine which makes comparing with other devices not possible, because no other device combines color images with OCT. This is a great feature.”

Dr. Khoa

“The capturing and quality of images are much better than other OCTs.”



What do you think of the multimodality of the DRI OCT Triton?

Dr. Arias

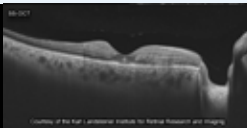
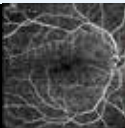
“Currently we agreed that the all-in-one imaging technology is not enough to take the right decision to treat patients. We need multimodal images. With the Triton you see that it is possible. Multimodal is fast and it provides information that is crucial and essential. Only one image is not enough.”

Dr. Jafree

“With the Triton Plus you can get color images. This is extremely useful with lesions. Clearly changed our practice.”

Prof. Khairallah

“Very important! The multi modal is very important to make correct diagnosis and is the best management approach towards our patients. We can combine and compare and make a good decision based on SS OCT and OCT A.”



Dr. Mekki

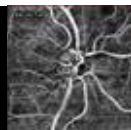
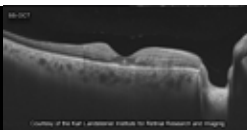
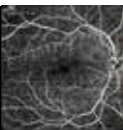
“It has changed the way in our practice.”

Prof. Shah-Jørgensen

“Multimodality is really necessary. We have a high workflow and most patients are of old age and/or have mobility problems. We therefore need one machine to make all the different measurements. Patients don't like to sit behind different devices, it is important that most tests can be done within one device to save time and it creates more convenience towards the patient.”

Dr. Tasindi

“Very good. We have the chance to change retinography with the multimodality function. Very deep scans and easy to evaluate. I love that part very much.”



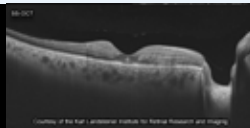
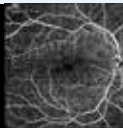
What do you think of the combination of Swept Source OCT and OCT A?

Dr. Arias

“OCT A is important cause we need to see the vessels. It is the source of leakage and only with OCT A you can see this. We don't need injections and the dye. And we can see the vessels in different levels and deeper plexus and outer retina all in one picture.”

Prof. Khairallah

“The correlation between structure changes seen in OCT with fluo changes in retina and choroid, is very important and useful information.”

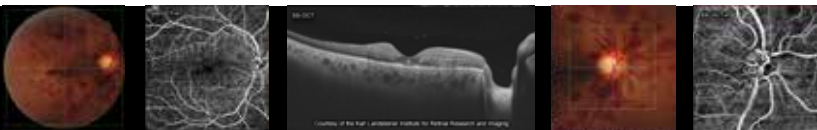


Dr. Mekki

“We go deeper and we see better. We go until the sclera. A lot of pathologies start in the choroid, and with SS OCT we can assess the choroid and below. When we combine both, we go deeper and therefore we can better analyze the pathologies.”

Dr. Tasindi

“Technology keeps improving and gives doctors very good opportunities to assess different diseases. With the combination of SS OCT & OCT A you can evaluate the total retinal image within minutes. Many diabetic patients in my country worry about the dye injections, but with the Triton this is not necessary! That is a really big improvement.”



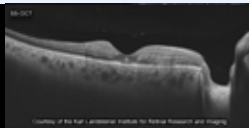
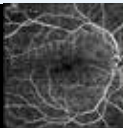
Why should other doctors consider upgrading from Spectral Domain OCT to Swept Source OCT?

Dr. Arias

“SS OCT is clearly superior to spectral OCT due to longer wavelength and possibility to explore all the different layers of the retina.”

Dr. Jafree

“Acquisition time is very fast. Scan quality is much better, the depth is very good, so you can see the choroid, and with diseases like AMD you can now find out that it is different spectrum of disease, because we didn't see choroid before. I think it is important that people move forward with the technology and the new spectrum of diseases that we now can see in the choroid which they cannot see if they use the spectral domain.”

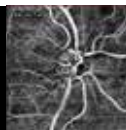
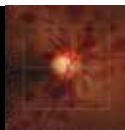
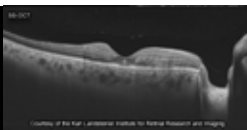
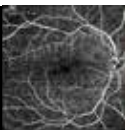


Prof. Khairallah

“I would encourage colleagues to move from spectral domain to SS OCT, because of the faster acquisition time, deeper and better penetration through opacities including vitreous, and with much better images of the retina, mainly the choroid.”

Dr. Tasindi

“With the SS OCT you have the chance to clearly see what is going on and detect diseases at a very early stage. Patients clearly understand now what is going on and they want the doctor to use SS OCT as well. Therefore, patients want you to use SS OCT and by using it you gain knowledge about what is going on with the patient at a very early stage.”



IMPORTANT

Not available in all countries, please check with your distributor for availability in your country.

Subject to change in design and/or specifications without advanced notice.

In order to obtain the best results with this instrument, please be sure to review all user instructions prior to operation.

Medical device Class IIa. Manufacturer: Topcon Corporation.



TOPCON CORPORATION



TOPCON CORPORATION

Topcon Europe Medical B.V.

Essebaan 11; 2908 LJ Capelle a/d IJssel; P.O. Box 145;
2900 AC Capelle a/d IJssel; The Netherlands
Phone: +31-(0)10-4585077; Fax: +31-(0)10-4585045
E-mail: medical@topcon.eu; www.topcon-medical.eu

Topcon Danmark

Præstemarksvænge 25; 4000 Roskilde, Denmark
Phone: +45-46-327500; Fax: +45-46-327555
E-mail: info@topcon.dk
www.topcon.dk

Topcon Scandinavia A.B.

Neogatan 2; P.O. Box 25; 43151 Mölndal, Sweden
Phone: +46-(0)31-7109200; Fax: +46-(0)31-7109249
E-mail: medical@topcon.se; www.topcon.se

Topcon España S.A.

HEAD OFFICE: Frederic Mompou, 4;
08960 Sant Just Desvern; Barcelona, Spain
Phone: +34-93-4734057; Fax: +34-93-4733932
E-mail: medica@topcon.es; www.topcon.es

Topcon Italy

Viale dell' Industria 60;
20037 Paderno Dugnano, (MI) Italy
Phone: +39-02-9186671; Fax: +39-02-91081091
E-mail: info@topcon.it; www.topcon.it

Topcon France Medical S.A.S.

BAT A1; 3 Route de la Révolte, 93206 Saint Denis Cedex
Phone: +33-(0)1-49212323; Fax: +33-(0)1-49212324
E-mail: topcon@topcon.fr; www.topcon-medical.fr

Topcon Deutschland GmbH

Hanns-Martin-Schleyer Strasse 41;
D-47877 Willich, Germany
Phone: (+49) 2154-885-0; Fax: (+49) 2154-885-177
E-mail: info@topcon-medical.de; www.topcon-medical.de

Topcon Polska Sp. z o.o.

ul. Warszawska 23; 42-470 Siewierz; Poland
Phone: +48-(0)32-670-50-45; Fax: +48-(0)32-671-34-05
www.topcon-polska.pl

Topcon Great Britain Medical Ltd.

Topcon House; Kennet Side; Bone Lane; Newbury
Berkshire RG14 5PX; United Kingdom
Phone: +44-(0)1635-551120; Fax: +44-(0)1635-551170
E-mail: medical@topcon.co.uk; www.topcon.co.uk

Topcon Ireland

Unit 276, Blanchardstown; Corporate Park 2
Ballycoolin; Dublin 15, Ireland
Phone: +353-18975900; Fax: +353-18293915
E-mail: medical@topcon.ie; www.topcon.ie



TOPCON CORPORATION

75-1 Hasunuma-cho, Itabashi-ku, Tokyo 174-8580, Japan.
Phone: 3-3558-2523/2522, Fax: 3-3960-4214, www.topcon.co.jp