



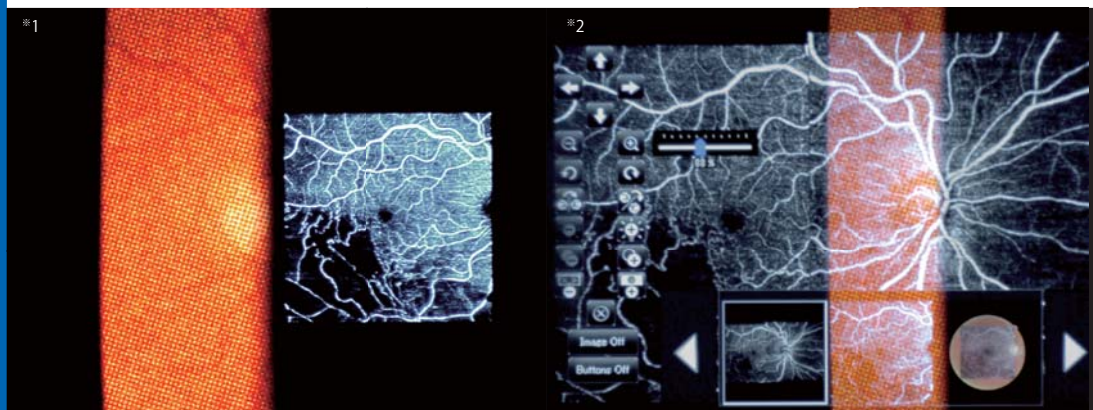
YOUR VISION. OUR FOCUS.

# HUD-1

## Head Up Display System

A New Tool for Retinal Photocoagulation.

The HUD-1 system allows you to observe multiple previously-captured images while you operate your microscope, helping you make a final pretreatment confirmation with less disruption and screen checking.



new

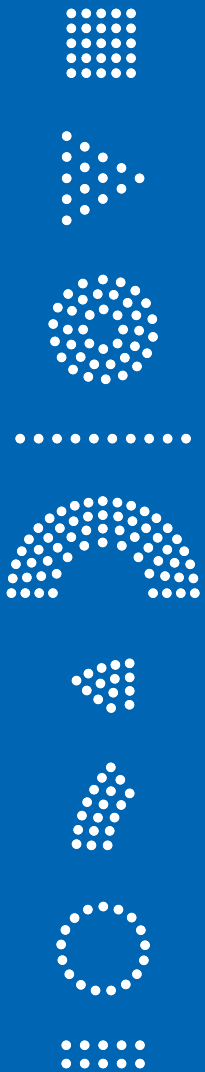
## HUD-1

Head Up Display System  
with PASCAL Synthesis

\*1 \*2 These are sample images of fundus photos observed through the microscope.

Diseased eyes photos courtesy of Carl Glittenberg, MD Karl Landsteiner Institute for Retinal Research and Imaging

\*2 This system does not have a feature for a HUD-1 projection image to track a real image.



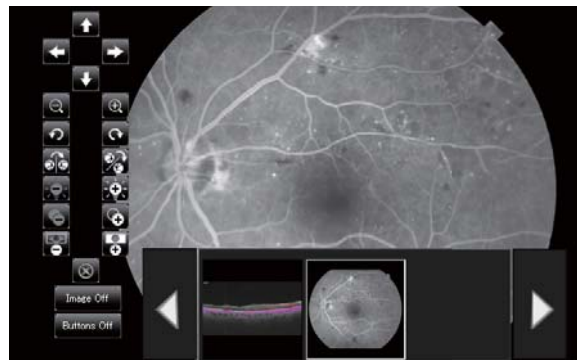


## Compact Design

Compact design ensures comfortable operation of the slit lamp.

## Flexible Image Adjustment

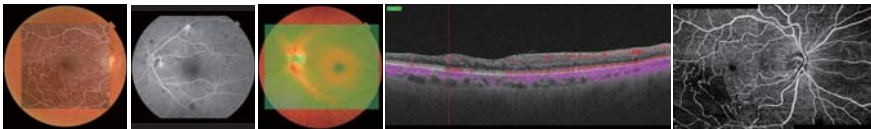
Dedicated software allows you to adjust the magnification, position, brightness, contrast, and transmittance of projected images while you're looking through the machine's eyepiece.



HUD-1 Management Application screen image projected by HUD-1 at the time of image adjustment.

## Compatible With Multiple Image Data

Multiple types of eye-fundus image data can be displayed, including FA/IA, OCT-B scan and OCT-A images.



\*1) HUD-1 Management Application is a dedicated program shipped with HUD-1 to install on a general-purpose PC.



TOPCON CORPORATION



TOPCON CORPORATION



TOPCON CORPORATION



### TOPCON CORPORATION

75-1 Hasunuma-cho, Itabashi-ku, Tokyo 174-8580, Japan. Phone:+81-(0)3-3558-2522/2502 Fax:+81-(0)3-3965-6898 www.topcon.co.jp

#### TOPCON MEDICAL SYSTEMS, INC.

111 Bauer Drive, Oakland, NJ 07436, U.S.A.  
Phone:+1-201-599-5100 Fax:+1-201-599-5250 www.topconmedical.com

#### TOPCON CANADA INC.

110 Provencier Avenue, Boisbriand, QC J7G 1N1 CANADA  
Phone:+1-450-430-7771 Fax:+1-450-430-6457 www.topcon.ca

#### TOPCON EUROPE MEDICAL B.V.

Essebaan 11, 2908 LJ Capelle a/d IJssel, P.O.Box145,  
2900 AC Capelle a/d IJssel, THE NETHERLANDS  
Phone:+31-(0)10-4585077 Fax:+31-(0)10-4585045  
E-mail: medical@topcon.eu www.topcon-medical.eu

#### ITALY OFFICE

Viale dell'Industria 60, 20037 Paderno Dugnano, (Milano), ITALY  
Phone:+39-02-9186671 Fax:+39-02-91081091 E-mail: info@topcon.it; www.topcon.it

#### DANMARK OFFICE

Praestemarksvej 25, 4000 Roskilde, DANMARK  
Phone:+45-46-327500 Fax:+45-46-327555  
E-mail: topcon@topcondanmark.dk www.topcondanmark.dk

#### IRELAND OFFICE

Unit 276, Blanchardstown, Corporate Park 2 Ballycoolin Dublin 15, IRELAND  
Phone:+353-1897900 Fax:+353-18293915 E-mail: medical@topcon.ie; www.topcon.ie

#### TOPCON S.A.R.L.

BAT A1 3 route de la révolte 93206 SAINT DENIS CEDEX  
Phone:+33-1-49-21-23-23 Fax : +33-1-49-21-23-24 E-mail:topcon@topcon.fr; www.topcon.fr

#### TOPCON DEUTSCHLAND MEDICAL G.m.b.H.

Hanns-Martin-Schleyer Strasse 41; D-47877 Willich, GERMANY  
Phone:+49-(0)2154-8850 Fax:+49-(0)2154-885177 E-mail:med@topcon.de; www.topcon.de

#### TOPCON SCANDINAVIA A.B.

Neogatan 2, P.O.Box 25; 43151 Mölndal, SWEDEN  
Phone:+46-(0)31-7109200 Fax:+46-(0)31-7109249 E-mail:medical@topcon.se; www.topcon.se

#### TOPCON ESPAÑA S.A.

Frederic Mompou 4 Esc. A Bajos 3, 08960 Sant Just Desvern Barcelona, SPAIN  
Phone:+34-93-4734057 Fax:+34-93-4733932 E-mail: medica@topcon.es; www.topcon.es

#### TOPCON ( GREAT BRITAIN ) LTD.

Topcon House,Kennet Side,Bone Lane,Newbury,Berkshire RG14 5PX United Kingdom  
Phone:+44-(0)1635-551120 Fax:+44-(0)1635-551170 E-mail:medical@topcon.co.uk; www.topcon.co.uk

#### TOPCON POLSKA Sp. z o. o.

ul. Warszawska 23; 42-470 Siewierz, POLAND  
Phone:+48-(0)32-6705045 Fax:+48-(0)32-6713405 www.topcon-polska.pl

#### TOPCON SINGAPORE MEDICAL PTE. LTD.

1 JALAN KILANG TIMOR #09-01 PACIFIC TECH CENTRE SINGAPORE 159303  
Phone:+65-68720606 Fax:+65-67736150  
E-mail:medical\_sales@topcon.com.sg www.topcon.com.sg

#### REPRESENTATIVE OFFICE IN INDONESIA

Level 38, Tower A, Kota Kasablanka unit GH-04, Jl. Casablanca, Kav 88, Jakarta, Indonesia 12870  
Phone:+62-21-2963-8004

#### TOPCON INSTRUMENTS ( MALAYSIA ) SDN.BHD.

No. D1, (Ground Floor), Jalan Excella 2, Off Jalan Ampang Putra,  
Taman Ampang Hill, 55100 Kuala Lumpur,MALAYSIA  
Phone:+60-(0)3-42709866 Fax:+60-(0)3-42709766

#### TOPCON INSTRUMENTS ( THAILAND ) CO.,LTD.

77/162 Sinnsathorn Tower, 37th Floor,Krungthoburi Rd.,Klongtonnai,  
Klongsarn, Bangkok 10600,THAILAND  
Phone:+66(0)2-440-1152-7 Fax:+66-(0)2-440-1158

#### Mehra Eyetech Private Limited

801 B Wing, Lotus Corporate Park, Graham Firth Steel Compound Goregaon (East)  
Mumbai 400063 Maharashtra, INDIA  
Phone:+91-22-61285455 www.mehraeyetech.in