

KR-800PA

Auto Kerato-Refractometer



KR-800PA

Auto Kerato-Refractometer



Enhanced Auto Kerato-Refractometer

offering quick and stable measurements and informative corneal color mapping



Quick and stable

- Stable and efficient examination
- **Patented Rotary Prism technology** ensures stable, repeatable measurements



Corneal Shape Information

- **Informative** corneal color mapping



Efficient Examination

- Semi-automatic alignment with **automated capture**
- Color mapping data can be acquired simultaneously with the refractive data **in one capture**



Patient Friendly

- Invisible infrared light

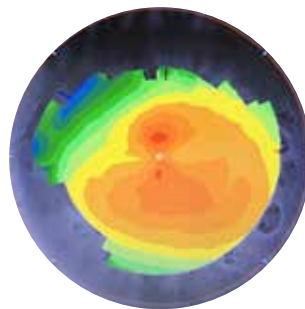


Space Saving

- 3 in 1 (REF/KRT/Corneal Mapping)
- Compact design

Informative

The Corneal Color Mapping is easily acquired together with exam data from the Refractometer/Keratometer. There is no need for an additional acquisition to obtain corneal color mapping data. The KR-800PA can improve your examination workflow and function as a screening device, providing additional information to help you customize patient care.



Patient Friendly

The Infrared Light, used by the KR-800PA for color mapping examination, measures without the use of visible light. There is no bright light source to cause discomfort or pupil constriction during the examination.



Space Saving

The 3 in 1 feature of the KR-800PA and compact design contributes to additional space savings for your practice. **Combination REF/KRT and Corneal Color Mapping** optimizes clinic workflow.



Ease of Use

The 3D Auto Alignment feature maintains XYZ alignment even during small eye movements, providing consistent and repeatable measurements. The operator follows the alignment guidance on the monitor for initial alignment, and then automatic alignment and measurement take over. The 3D Auto Alignment function supports easy operation and delegation.



Adjust chinrest height with touch panel



Adjust device position



Auto alignment and measurement begins

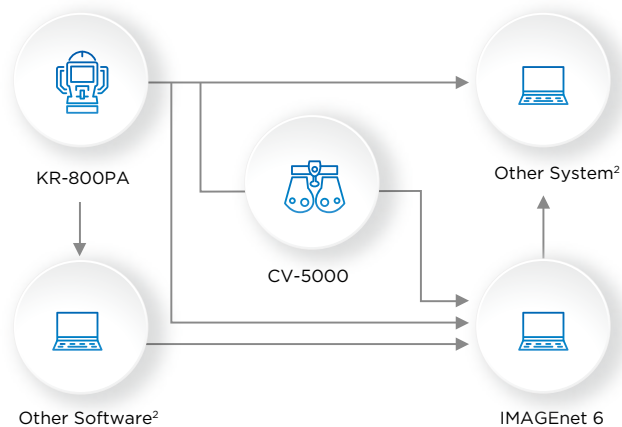


Complete

Specifications

Refractive power measurement	Spherical refractive power	-25D to +22D (0.12D/0.25D steps) ¹
	Cylindrical refractive power	0D to ±10D (0.12D/0.25D steps) ¹
	Astigmatic axial angle	1° to 180° (in 1° or 5° steps)
	Minimal measurable pupil diameter	ø2 mm
Corneal curvature measurement	Corneal curvature radius	5.00 to 10.00 mm (0.01 mm step)
	Corneal refractive power	67.50D to 33.75D (0.12D/0.25D steps) (where corneal refractive power = 1.3375)
	Corneal astigmatic refractive power	0D to ±10D (0.12D/0.25D steps)
	Corneal astigmatic axial angles	1° to 180° (1°/ 5° steps)
PD measurement range		20 mm to 85 mm (0.5 mm steps)
Data transport terminal		USB (import) /RS-232C (import/export) / LAN (export)
Dimensions		321-340 mm (W) × 523-539 mm (D) × 490-520 mm (H)
Weight		19 kg
Power supply		100-240V AC, 50-60Hz

1. $-25D \leq \text{spherical refractive power} + \text{cylindrical refractive power}$ or $\text{spherical refractive power} + \text{cylindrical refractive power} \leq +22D$



2. Please ask your dealer or distributor for details and availability of other systems and software.
2. Connection with other software and other systems is not certified by Topcon.

IMPORTANT

Subject to change in design and/or specifications without advanced notice.
In order to obtain the best results with this instrument, please be sure to review all user instructions prior to operation.



Topcon Europe Medical B.V.
Essebaan 11, 2908 LJ Capelle a/d IJssel, The Netherlands
P.O. Box 145, 2900 AC Capelle a/d IJssel, The Netherlands
T +31-(0)10-4585077, F +31-(0)10-4585045
medical@topcon.eu, www.topcon-medical.eu

Topcon Danmark
Præstemarksvænge 25, 4000 Roskilde, Denmark
T +45-46-327500, F +45-46-327555
info@topcon.dk, www.topcon.dk

Topcon Scandinavia A.B.
Neongatan 2, P.O. Box 25, 43151 Mölndal, Sweden
T +46-(0)31-7109200, F +46-(0)31-7109249
medical@topcon.se, www.topcon-medical.se

Topcon España S.A.
Head Office: Frederic Mompou 4
08960 Sant Just Desvern, Barcelona, Spain
T +34-93-4734057, F +34-93-4733932
medica@topcon.es, www.topcon-medical.es

Topcon Italy
Viale dell'Industria 60
20037 Paderno Dugnano (MI), Italy
T +39-02-9186671, F +39-02-91081091
info@topcon.it, www.topcon-medical.it

Topcon France Medical S.A.S.
BAT A1, 3 Route de la Révolte
93206 Saint Denis Cedex, France
T +33-(0)1-49212323, F +33-(0)1-49212324
topconfrance@topcon.com, www.topcon-medical.fr

Topcon Deutschland GmbH
Hanns-Martin-Schleyer Straße 41
D-47877 Willich, Germany
T +49-2154-885-0, F +49-2154-885-177
info@topcon-medical.de, www.topcon-medical.de

Topcon Polska Sp. z o.o.
ul. Warszawska 23, 42-470 Siewierz, Poland
T +48-(0)32-670-50-45, F +48-(0)32-671-34-05
info@topcon-polska.pl, www.topcon-polska.pl

Topcon Great Britain Medical Ltd.
Topcon House: Kennet Side, Bone Lane
Newbury Berkshire, RG14 5PX, United Kingdom
T +44-(0)1635-551120, F +44-(0)1635-551170
medical@topcon.co.uk, www.topcon-medical.co.uk

Topcon Ireland Medical
Unit 292, Block G, Blanchardstown, Corporate Park 2
Ballycoolin, Dublin 15, D15 DX58, Ireland
T +353-18975900, F +353-18293915
medical@topcon.ie, www.topcon.ie



TOPCON CORPORATION

75-1 Hasunuma-cho, Itabashi-ku, Tokyo 174-8580, Japan.
T 3-3558-2523/2522, F 3-3960-4214, www.topcon.co.jp