

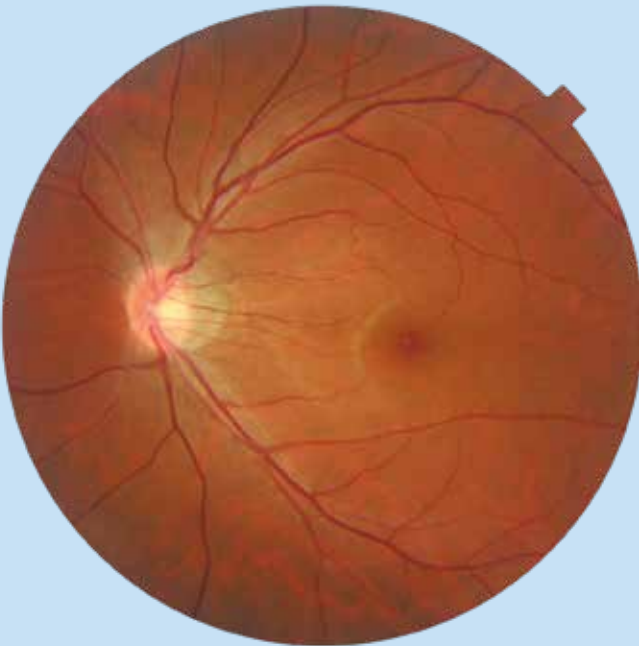
TRC-NW8 series

Non-mydriatic retinal camera



The combo retinal camera TRC-NW8 series

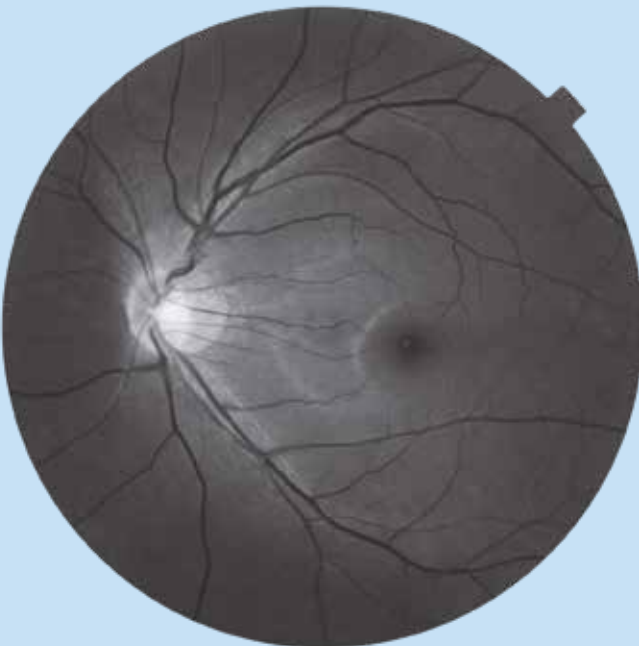
Color



Fluorescence Angiography



Red-free



Fundus AutoFluorescence**



Features

- | Multifunctional retinal camera
- | Lower flash intensity
- | Easy to use
- | Continuous shooting function
- | Autofocus and autoshoot
- | Auto small pupil detection
- | Compact design

Impressive line-up of retinal imaging for all vision care professionals

With TRC-NW8 series, it is possible to capture not only Non-Mydriatic Color / Red-free / Fluorescein Angiography, but also Fundus Auto Fluorescein to answer all your needs.



TRC-NW8

TRC-NW8

TRC-NW8 allows easy operation by autofocus / autoshoot function.



TRC-NW8F

TRC-NW8F

TRC-NW8F allows patient-friendly Fluorescence Angiography photography by lower flash intensity.



TRC-NW8F plus

TRC-NW8F plus

TRC-NW8F plus allows to capture multi photography such as Color, red-free*, Fluorescence Angiography, and AutoFluorescence photography.



* Digital red-free only on TRC-NW8F plus

** Image courtesy of Oogkliniek Deurne

Easy to use



Autofocus and autoshoot

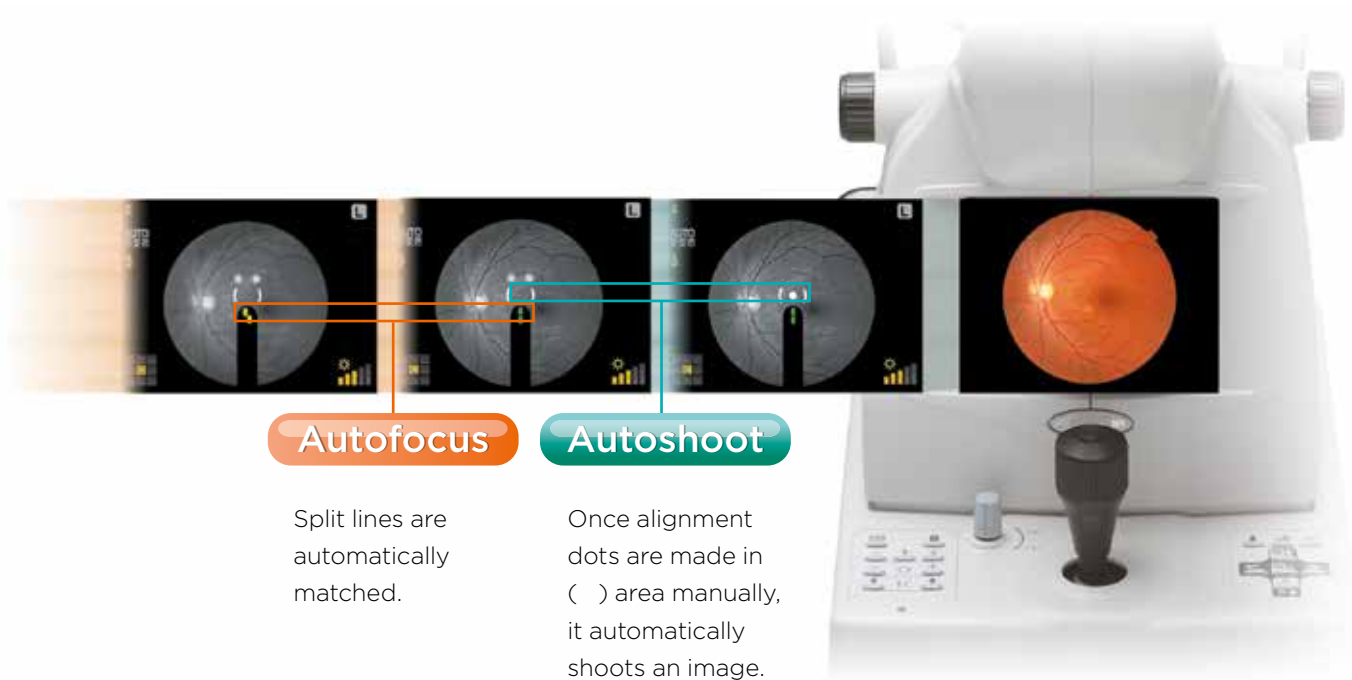
TRC-NW8

TRC-NW8F

TRC-NW8F plus

TRC-NW8 series is Topcon's multifunctional retinal camera which is focused on 'simple operation'. With our experience in the production of retinal

cameras, we have been able to bring all of the benefits of our non-mydratic camera into this multifunctional camera. The ability of autofocus and autoshoot makes the operation of this camera extremely simple and user-friendly. While still allowing manual override when required.



Auto small pupil detection

TRC-NW8

TRC-NW8F

TRC-NW8F plus

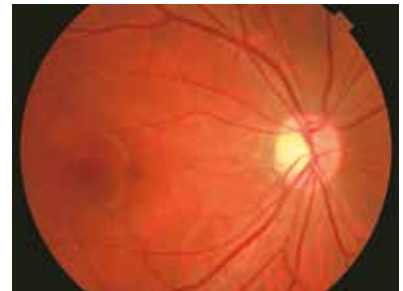
Small pupils are a common phenomenon, and when mydriatic drops cannot be used, the 'small pupil' (\varnothing 3.3 mm) option within the TRC-NW8 series will make sure you are able to get a shot.



\varnothing 3.3 mm



Auto small pupil detection mode:
Angle of coverage 45°



Auto small pupil detection mode:
Angle of coverage 30° (digital zoom)



Low flash intensity

TRC-NW8

TRC-NW8F

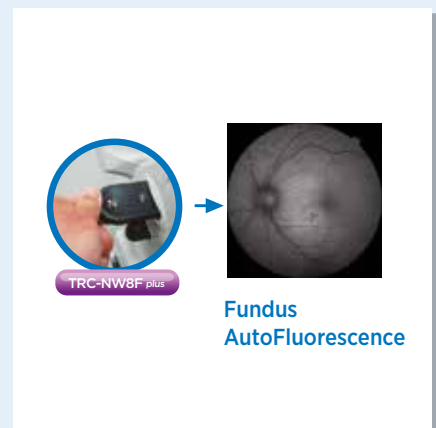
TRC-NW8F plus

Topcon has always endeavoured to keep flash levels as low as possible while at the same time ensuring that good exposed images are achieved. For FA photography, it can be performed by half the flash intensity compared to our conventional models.

One-touch operation

Red-free photography is easily switchable, simply use the filter lever. The FA photography is also easily

switchable, just press the mode switch. In case of TRC-NW8F plus model, the FAF photography mode can simply be activated by pulling out the filter lever.



High quality image

The quality of the image is crucial as well as the durability

TRC-NW8

TRC-NW8F

TRC-NW8F plus

With these important requirements, Topcon did not hesitate in deciding on which manufacturer it would use as its digital camera supplier. Nikon probably has the largest reputation when it comes to digital SLR cameras and is used by most of the worlds press for a very good reason. Therefore you have no need to worry that your new TRC-NW8 series will ever be compromised by the digital SLR in terms of quality of images or durability.



Healthy eye



Diabetic retinopathy



Glaucoma



Stereo photography

TRC-NW8

TRC-NW8F

TRC-NW8F plus

Today is there an increasing need for viewing stereo images and with the TRC-NW8 series camera this has been made very simple with the inclusion of a stereo switch. Once pressed the camera controls fixation to allow for two consecutive images to be captured with just the right amount of shift. These stereo pairs can then be viewed easily on Topcon's IMAGEnet® software and allow for easier diagnosis.

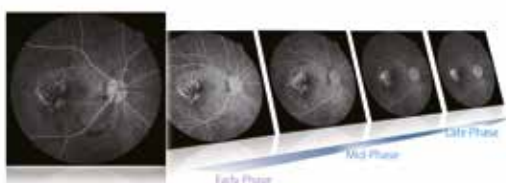


True optical red-free photography

TRC-NW8

TRC-NW8F

Topcon has developed an innovative feature on TRC-NW8/ TRC-NW8F: True optical red-free capability with an actual red-free filter. This feature allows for high resolution red-free images acquisition.



Fluorescence angiography photography

TRC-NW8F

TRC-NW8F plus

Fluorescein angiography with TRC-NW8F/TRC-NW8F plus allows for much easier photographic sessions. With the lower flash levels used, patients will find the experience much more comfortable and as a consequence the operators are able to concentrate on getting the images they need.

Imaging system



Always high contrast images available

TRC-NW8F

TRC-NW8F plus

Using the TRC-NW8F/TRC-NW8F plus always provides the operator with the option to use high contrast or a sharpening tool* in order to aid diagnosis.

*Incorporated into Topcon optional IMAGEnet® Software

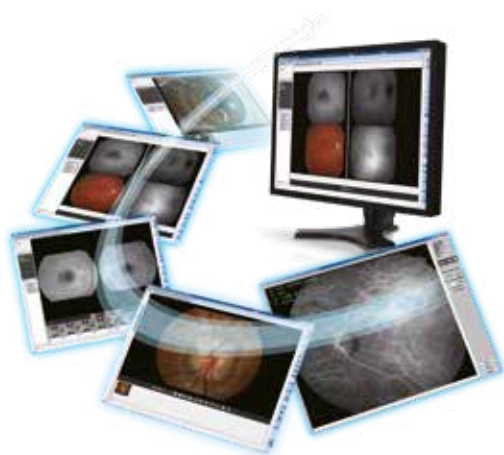


Fundus AutoFluorescence photography

TRC-NW8F plus

Use of the TRC-NW8F plus allows the operator to capture the AutoFluorescence of Lipofuscin and to show the sub macula area clearly using the built-in FAF filters. These filters have been specifically designed to avoid absorption of xanthophy. It is very useful to observe the change of chorioretinal atrophy in age-related macular degeneration.

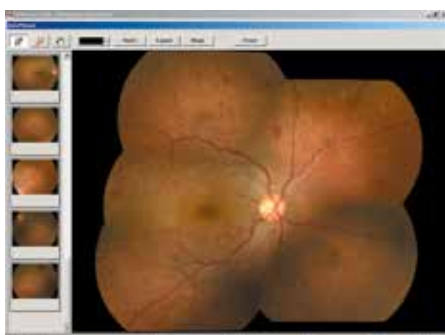
Spaide FAF filter is produced under the supervision and authorization of Dr. Richard F. Spaide, Vitreous, Retina, Macula Consultants of New York, NY, USA.



IMAGEnet®

IMAGEnet's comprehensive patient database management system features efficient dataviewing, storage, analysis and flexible networking solutions. With its unique utilities, such as auto mosaic and stereo functionality, IMAGEnet® software streamlines exam analysis and enhances communication with the patient.

Simple and easy IMAGEnet® software allows you to transfer and save retinal images with intuitive handling. Timer, R/L eye detection, angle and patient data will also be transferred with the image.



Auto mosaic optional software

A panoramic view of the retina is seamlessly stitched together using Auto Mosaic software. By using a special algorithm to detect vessel edges, the fields that are taken randomly are automatically arranged in their correct positions without user intervention.

Specifications

Angle of coverage	45°
Working distance	40.7 mm
Pupil diameter for photography	Ø4.0 mm or more Ø3.3 mm or more when the small pupil diaphragm is used
Type of photography	Color photography, red-free photography*, FA photography** and FAF photography***
Patient dioptre correction range	Without correction lens: -13D to +12D (where split lines are used) With minus correction lens: -33D to -12D With plus correction lens: +9D to +40D
Auxiliary function for photography	Autofocus function (used only in the split line working range. This can be turned ON/OFF)
Fixation target	Internal / External fixation can be selected Internal fixation target Centre / Periphery Right / Left eye automatic detection Optional position presetting function
Base movement	Back and forth: 46.0 mm, Right and left: 100.0 mm, Up and down: 30.0 mm
Chinrest movement	67.0 mm
Power source	Frequency: 50 - 60Hz, Voltage: AC100 - 240V
Weight	23.5 kg (TRC-NW8/TRC-NW8F), 23.8 kg (TRC-NW8F plus)
Dimensions	274 mm (W) x 508 mm (D) x 536-566 mm (H)
Power consumptions	400VA (maximum), 100VA (normal)

*TRC-NW8F plus model: Digital red-free

** Only for TRC-NW8F and TRC-NW8F plus models

*** Only for TRC-NW8F plus model

Optional accessory



External fixation target (EF-2)

IMPORTANT

Subject to change in design and/or specifications without advanced notice.
In order to obtain the best results with this instrument, please be sure to review all user instructions prior to operation.
Medical device Class IIa. Manufacturer: Topcon Corporation.



TOPCON CORPORATION

TOPCON CORPORATION

Topcon Europe Medical B.V.
Essebaan 11; 2908 LJ Capelle a/d IJssel; P.O. Box 145;
2900 AC Capelle a/d IJssel; The Netherlands
Phone: +31-(0)10-4585077; Fax: +31-(0)10-4585045
E-mail: medical@topcon.eu; www.topcon-medical.eu

Topcon Danmark
Præstemarksvej 25; 4000 Roskilde, Denmark
Phone: +45-46-327500; Fax: +45-46-327555
E-mail: info@topcon.dk
www.topcon.dk

Topcon Scandinavia A.B.
Neongatan 2; P.O. Box 25; 43151 Mölndal, Sweden
Phone: +46-(0)31-7109200; Fax: +46-(0)31-7109249
E-mail: medical@topcon.se; www.topcon.se

Topcon España S.A.
HEAD OFFICE; Frederic Mompou, 4;
08960 Sant Just Desvern; Barcelona, Spain
Phone: +34-93-4734057; Fax: +34-93-4733932
E-mail: medica@topcon.es; www.topcon.es

Topcon Italy
Viale dell'Industria 60;
20037 Paderno Dugnano, (MI) Italy
Phone: +39-02-9186671; Fax: +39-02-91081091
E-mail: info@topcon.it; www.topcon.it

Topcon France Medical S.A.S.
BAT A1; 3 Route de la Révolte, 93206 Saint Denis Cedex
Phone: +33-(0)1-49212323; Fax: +33-(0)1-49212324
E-mail: topcon@topcon.fr; www.topcon-medical.fr

Topcon Deutschland GmbH
Hanns-Martin-Schleyer Strasse 41;
D-47877 Willich, Germany
Phone: (+49) 2154-885-0; Fax: (+49) 2154-885-177
E-mail: info@topcon-medical.de; www.topcon-medical.de

Topcon Polska Sp. z o.o.
ul. Warszawska 23; 42-470 Siewierz; Poland
Phone: +48-(0)32-670-50-45; Fax: +48-(0)32-671-34-05
www.topcon-polska.pl

Topcon Great Britain Medical Ltd.
Topcon House; Kennet Side; Bone Lane; Newbury
Berkshire RG14 5PX; United Kingdom
Phone: +44-(0)1635-551120; Fax: +44-(0)1635-551170
E-mail: medical@topcon.co.uk; www.topcon.co.uk

Topcon Ireland
Unit 276, Blanchardstown; Corporate Park 2
Ballycoolin; Dublin 15, Ireland
Phone: +353-18975900; Fax: +353-18293915
E-mail: medical@topcon.ie; www.topcon.ie



TOPCON CORPORATION

75-1 Hasunuma-cho, Itabashi-ku, Tokyo 174-8580, Japan.
Phone: 3-3558-2523/2522, Fax: 3-3960-4214, www.topcon.co.jp